



New Hope News



Volume 19, Issue 2

New Hope Lutheran Church

March 2011

Isaiah 58: 6-7

*Is not this the fast that I choose:
to loose the bonds of injustice,
to undo the thongs of the yoke,
to let the oppressed go free,
and to break every yoke?*

*Is it not to share your bread with the hungry,
and bring the homeless poor into your house;
when you see the naked, to cover them,
and not to hide yourself from your own kind?*

In Isaiah 58, one of the texts for Ash Wednesday – yes, that’s coming soon! – we hear of rituals of penance that the people are doing without real meaning. This third part of Isaiah was written about 490 B.C.E. and the prophet condemns the people who, though participating in rituals of repentance, were still ignoring God’s demands of justice by oppressing the poor.

Indeed, Isaiah tells the people that sackcloth and ashes, fasting and fainting are not what is acceptable to God – rather it is justice, freeing the oppressed, and sharing with the homeless and hungry. Then, God will guide you, satisfy your thirst for faith, strengthen you – caring for you as a skilled gardener so that you will flourish.

We enter into Lent with ash and soot, necks bent in prayer. We lay our confessions down, speaking in the shadows of our sin. Yet, we leave with the truth traced on our foreheads.

Yes, I am a sinner. Yes, I am a mortal. Yes, death comes. Sin and death are smeared over us reminding us of the reality, the inevitable reality, of our end - and we cry MERCY!

In the midst of our sin, we plead for the God, the only God, who has the power to do anything about sin and all the ways of death. Here we say, come here, Lord, and hear our prayer, listen to our confession, for you are God.

So we tell the truth – Lord, I have been unfaithful to you and haven’t really loved my neighbor. Lord, I have neglected those very ones I am to love and have allowed injustice to continue. Wash me, please wash me, create in me a clean heart.

And we hear God, gracious and merciful, slow to anger and abounding with steadfast love, washing us clean with the blood of Jesus.

Consider the ways of God. Amen

Blessings,
Pastor Kathryn

Ash Wednesday

Join us on **Wednesday, March 9th at 7:00 p.m.** for *Ash Wednesday Service*. On this day the Church invites us to receive a cross of ashes on our foreheads as a sign that during the coming Season of Lent we will make sincere efforts to cleanse our lives of sin and to discipline ourselves through prayer and fasting.

The ashes are made from the burned-up palms from last year's Palm Sunday.



Wednesday Lenten Services



Make attending mid week Lenten services a part of your Lenten discipline.

From March 16th to April 13th New Hope will offer a Lenten service at 7:00 p.m.

This years theme will be called

"Seek and You Will Find"

New Hope Grill will be open on Wednesday's during Lent

We will serve soup, salad, and sandwiches for hungry Lenten worshipers

from 6:00-6:30pm.

\$3.00 per plate

There will be plenty for even those who come in just at 6:30 pm

Join us for worship at 7:00 pm.

After worship, join us for family games in the Fellowship Hall.

Bring your favorite board game, card or domino's.



Thanks to everyone who has participated in the *Scripts Program* here at New Hope. When you purchase scrip, you're purchasing negotiable gift certificates and prepaid cards that are used just like cash. You can use scrip to purchase everyday expenses like food, clothing, and other essentials and with every purchase New Hope earns a percentage.!

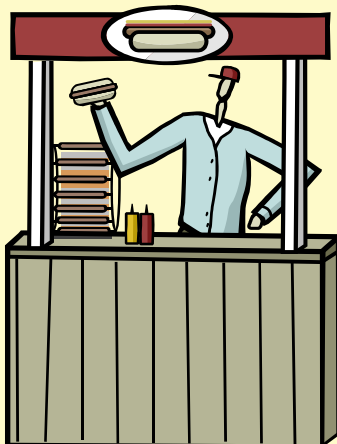
Just over the past 5 weeks, New Hope has earned \$580.00!!!!!!!

Stop by the *Scripts* table on Sunday morning to order or see how you can set up a family account and order from the comfort of your own home! Let's keep it going! Watch also for "*Scripts Opportunity*" on Fellowship outings.

Orders must be placed by Monday to ensure next Sunday delivery



Have you signed up for the Concession Venue Ministry?



If not, contact Greg Carter (817-428-6228) for the opportunity to earn additional income for New Hope in order to expand New Hope's various ministries.

We are planning to work concessions at the Texas Motor Speedway on April 9th.

Contact Greg for details about training.



Monthly Fellowships

Men's Breakfast

The men will meet on **Saturday, March 5th at 8:00 a.m.** at **Our Place** in Fort Worth. Our Place is located at the corner of North Beach and Basswood.

Women's Breakfast

The women will meet on **Saturday, March 12th at 9:00 a.m.** at **Our Place** in Fort Worth. Our Place is located at the corner of North Beach and Basswood.

PIT Crew (Parents of Infants to Tweens)

Join us for our next fellowship night on **Friday, March 11, at 7:00 pm.** We will be meeting at the church with the kids upstairs with the babysitters. Please bring a dish to share and your favorite board game! Call Sandy Kostecky at 940-627-1124 with any questions.

Family Movie Night

Join us on **Friday, March 18th at 7:00 p.m.** for New Hope Family Movie Night. Our first movie will be :

Nanny McPhee

Popcorn and great fellowship will be provided!



Adult 4th Saturday

Adult 4th Saturday will meet on **Saturday, March 26th at 5:30 p.m.** at **Mimi's Café** located at 1449 State Highway 114 west in Grapevine. Sign up in the Fellowship Hall.

Scripts Opportunity!

Women's Bunco

Monday, March 28th at 7:00 p.m. at the home of Jill Altman.

Directions will be posted on the Women's Board. New comers are welcome



News from Seminary.....

To our New Hope Family,

I am happy to report that the new semester has begun here at the Castle (Wartburg Seminary)! My classes have been proving to keep me busy, but I am keeping up with the readings. My favorite class has proved to be my preaching class where I get to hear the proclamation of word in very creative, different ways almost every day. Besides classes keeping me busy, I have been busy with applying for scholarships and getting creative in getting funding for my schooling next year.

Thankfully, God has blessed me with many gifts to fund almost all of my tuition for the next academic school year. My family and I have been very blessed with the community we have found here at the Castle. Please continue to pray for us as we continue in our journey here at this wonderful place.

Love and Blessings,
Jason, Michelle, and Rory Milini-Greenwald

New Hope has a fund established for the Greenwald's if you would like to help them during their seminary.

Please denote on the check
"Milini-Greenwald Fund"



LOOKING for A
Bible Study?

Tuesday Morning Women's Bible Study Tuesday's at 10:00 a.m. The group is currently studying a series on "*Honoring Our Neighbor's Faith*". Each lesson is on a different religion and compared to our Lutheran beliefs. Meetings are every Tuesday and newcomers welcome. See Carolyn Kendall for more info.

W.E.B.S (Women's Evening Bible Study) will meet on Tuesday's at 7:00

p.m. Beth Moore's "Breaking Free". We will focus on the definition of captivity which is "A Christian is held captive by anything that hinders the abundant and effective Spirit-filled life God planned for her. See Linda Milini for the home they will meet at.

Adult Sunday School meets at 10:00 a.m. in conference room 2. Currently studying

"Letting God change you from the inside out, Transformation"

Pastor's Adult Sunday School This group will study the "*Parables of Luke*" at 10:00 a.m. in Pastor's office.

New Hope is looking to grow this new ministry!

We are looking for people to grow this team. We need two to four people on a Sunday to staff the nursery. Please contact the church office or Heather Miller if you would like more information or to join in!





It's Okay to Be Human . . .

An important theme of the Lenten season is the humanity of Christ. In Jesus, God became human and fully experienced the wide range of emotions we all encounter in life. Jesus experienced times of loneliness, sadness, hurt, anger, disappointment, grief, and abandonment. That is part of being human. Another part of being human is needing help from each other. God never intended us to be completely self-sufficient. Part of God's plan is for each of us to turn to others for help when we need it.

So when you are experiencing difficult times, don't struggle alone. Our Stephen Ministers will walk with you, listen to you, encourage you, pray with you, and provide confidential one-to-one care to help you through tough times. Stephen Ministers can bring the love of Jesus back into your life. **To learn more about Stephen Ministry, talk to one of our Stephen Leaders Jill Altman, Jan Carter or Tina Williamson.**

Our Stephen Ministers are ready to care for you!

Four Reasons for ChristCare Groups

Growth- A ChristCare Group will help you grow in a deeper devoted relationship with Jesus through prayer and worship.

Care- In a ChristCare Group, you will have the opportunity to develop mature Christian caring skills and put them to use. You will develop the kind of love Jesus called us to when he said, "This is my commandment, that you love one another as I have loved you." (John 15:12)

Biblical Equipping- With Biblical Equipping you apply God's word to your daily life. You use lessons and resources that connect you with the Scriptures in a more formal way than most bible studies you probably have experienced.

Mission- Your group exists to serve God.



ChristCare groups are for everyone desiring a stronger personal relationship with Christ from the mature Christian to the new believer. They are Circles of Care with Christ at the Center.

To find out how you can join a ChristCare group see Jim Altman



March is here and we are ready to "Spring" forward at New Hope Christian School! **Registration for Summer Camp and the 2011-12 school year will begin for our New Hope families March 1st.** We will open registration up for the general public on March 15th, so secure your spot now with a \$75 per child registration fee.

Camp "Kool" (Kids Of Our Lord) will be 9 weeks of theme driven activities: art, cooking, play-time, field trips (for those 4 and over), presenters, splash days and more. Our own seminarian Michelle Greenwald will return to teach "Heroes of the Bible" during our Chapel time which should prove to be fun and exciting for all!

Spring Break will take place the week of March 14-18. There will not be preschool classes during this week, we will however be open our regular hours for our Extended Care families.

Spring and Grad pictures will be on March 23rd and 24th for our preschoolers!

Be on the look out for a "Pampered Chef" fundraiser in April as we raise funds to repair and improve the playground area. Your support and prayers for the preschool ministry are deeply appreciated.

If you have any questions, please call Debbie or Elizabeth in the preschool office at: 817-428-9393

New Hope Staff and Council

Ministers, People of New Hope

Staff

Rev. Kathryn Cox, Pastor

Rawlianne Campos, Minister of Music

Jill Altman, Parish Assistant

Administration

New Hope Christian School

Debbie Starbuck, NHCS Director

Elizabeth Kunkler, NHCS Asst. Director

Parish Lay Minister

Scott Martin

Council Officers

Dave Klym, President

Dave Sanders Vice-President

Gary Markestad, Secretary

Craig Williamson, Treasurer

Council Committee Liaisons

Bill Chase, Outreach

Sharon Hutchison, Membership

Dave Klym, Worship & Music

Gary Markestad, Ministry

Dave Sanders, Maturity

Pat Strobel, Facilities

Karin Urbanczyk, Missions

Craig Williamson, Finance

**Council Meets on
Sunday, Mar. 20th
at 12:30 p.m.**

**Church Office Hours
Monday-Friday
8:00 a.m. to 3:30 p.m.**



Join us on Sunday, March 6th during the Fellowship Hour to celebrate all the Birthday's in March.

There will be goodies for all to share and celebrate.

Sponsored by the ChristCare Empty Nesters I group.



Check out happenings in the NT-NL Synod

<http://www.ntnl.org/>





WORSHIP ASSISTANTS

Date and Service	Acolyte	Altar Guild	Ushers	AV	Nursery
March 6 8:30 a.m.	Brad Chase	Nicole Needham	Gary Bowker	Tim Carter	Amber Downes
11:00 a.m.	Jacob Naranjo	Sonja Anthony	Mark Walker Joann Walker		Merrily Stanglin
March 13 8:30 a.m.	Brad Chase	Carolyn Kendall	Dave Klym Marie Klym	Kyle Kunkler	Elizabeth Kunkler Katie Kunkler
11:00 a.m.	Jacob Naranjo	Cora Sanders	Bob Wooley Dorothy Wooley		Elizabeth Kunkler Katie Kunkler
March 20 8:30 a.m.	Brad Chase	Deb Hultberg	Jeff Hutchison Sharon Hutchison	Dakota Cherry	Amber Downes
11:00 a.m.	Jacob Naranjo	Merrily Stanglin	John Cooper Susan Cooper		Christina Brechler
March 27 8:30 a.m.	Brad Chase	Mary Cooper	Gary Markestad Kyle Markestad	Kelly Buttram	Open
11:00 a.m.	Jacob Naranjo	Joann Walker	Debbie Wood Mitchell Lera		Open

*Ash Wednesday
Worship Assistants*

7:00 p.m.		Jill Altman Janice Needham Nicole Needham Dorothy Wooley	Jim Cherry Dakota Cherry	none	Open
-----------	--	---	-----------------------------	------	------